

SPRING • SUMMER 2017

co²lor⁺lab
PRIVATE LABEL

SPRING MAKE-UP TRENDS

BLUSH
DRAPING

LIQUID MATTE
LIPSTICK
LUXURY GEL LINER

FEATURED STORY

NEW COLORS!



SS • 2017

Trend Report



From glossed over lids to color swept cheeks and eyes, Spring 2017 is all about color, both soft and vibrant. Soft pastel shades to bright colored blocked **80's inspired eyes and lips** were seen on runways from NY to Milan. Just when we thought that glitter was so last holiday, it has reinstated itself in the form of the dramatic **glitter pout**. The classic French manicure reinvented itself with a creative glitter flair of lining the cuticles. The dark, vampy, red lip of last season has updated itself in **bright shades of raspberry, orange and cherry red**. Dreamy watercolor eyes sparkled with **pastel shades** brushed artfully across the lid present a fresh, fun approach to Spring.

Are you ready for a pretty flush this season? A **rosy glow** was present everywhere.

Blush Draping a new technique which creates equal parts statement-making and youth. **Soft pink or peach** blush applied to the cheeks and upward towards the brow bone in semi-circle fashion.

The runways featured many **fun and playful** trends this season. Gear up for a season where anything goes...just remember to let your creativity flow and beauty reign.



1. Blush Draping
2. Watercolor Eyes
3. Bright Lips
4. Blossomed Over
5. Brights!
6. Nail It!!

NEW RTW
LIQUID MATTE LIPSTICK

8 New Shades!

THE BLUSH RUSH... BLUSH. Draping

Contouring has met its match! The latest type of chiseling is created with large brush strokes of blush and more blush. Blush draping replaces the traditional contouring and highlighting trend of the 80's. It is now making a comeback, this spring, in the form of blush to enhance cheekbones, brow bones and eyes.

Not much is needed to recreate this look. One shade of blush or eyeshadow in hues of pink or coral will do. Keep in mind that the cheek is overly exaggerated and is the center of attention with a bit of the same shade swept across the eyelid and over the temples. This trend will give you reason to blush!

CAMERA READY BLUSH



WE RECOMMEND: RTW

COOL



BERRY EXCLUSIVE
EYESHADOW
pink berry shimmer



CAMERA READY
BLUSH
rose pink shimmer

WARM



CANDY APPLE
EYESHADOW
peach w/pink-gold undertone



SWEETS
BLUSH
tangerine w/pink undertone shimmer

More!



BARELY ROSE,



BARELY PINK,



BARELY PEACH



TART



FRESH CORAL



FRESH ROSE



BARELY PLUM



FLUSHED



L'AMORE



SHELL

CUSTOM BLEND



CHARMING ROSE
3/8 t. Tourmaline
3/8 t. Amethyst
3/4 t. Champagne Frost



BREEZY PINK
1 t. Alabaster
1/4 t. Tourmaline
1/2 t. Sand Frost



FLAMINGO
1 t. Translucent Modifier
1/4 t. Tourmaline
1/4 t. Sunlight Gold
1/4 t. Sand Frost



FIFI
1 t. Alabaster
4 tiny Tourmaline
1/4 t. Gold Frost
4 tiny Garnet Frost

Colors may vary due to monitor settings and devices.

You're Blushing



WATERCOLOR EYE

SS•2017 TRENDS

CUSTOM
KEY LARGO

- 2 tiny scoops Saturated Blue
- 2 tiny Lapis
- 1 tiny Saturated Green
- 2 tiny Silver Frost
- 2 tiny Indigolite Frost
- ¾ † Alabaster
- ¼ † Crystal Frost



RTW
AQUAMARINE
pale blue green



CUSTOM
SEA FOAM

- ¼ † Alabaster
- ½ † Saturated Yellow
- ¾ † Moonlight Pearl
- 5 tiny Chrysolite Frost
- 7 tiny Saturated Green
- 1 tiny Saturated Blue



RTW
CHARTREUSE
light shimmer green



CUSTOM
GLEAMING GOLD

- 1 † Pink Frost
- ¼ † Gold Frost
- 6 tiny Sand Frost



RTW
SHY
soft gold



CUSTOM
VIOLET MIST

- ¾ † Alabaster
- ¼ + ½ † Pink Gold Frost
- ⅛ † + 5 tiny Silver Frost



RTW
FAIRY DUST
pale lavender with gold sparkle



WATERCOLOR EYE... With a fresh canvas and delicate brush strokes, pastel shadows create a soft yet colorful eye. Wash colors on in a mixed palette of lavender, aqua, chartreuse and shimmering gold for a delicate prismatic eye.

ColorlabPrivateLabel.com • 1.800.790.2417



GLOSSED OVER

Colors may vary due to monitor settings and devices.

CUSTOM
JEWEL

- Smoothie Base
- 1 tiny Gold Dust
- 1 tiny Crystal
- 3 tiny Diamond Dust



RTW
ALL THAT GLITTERS
sheer w/gold frost



CUSTOM
SHINE

- Smoothie Base
- .125 Coral
- .125 Peach



RTW
NAKED LIP GLOSS
sheer shine



CUSTOM
SUNSET

- Smoothie Base
- 4 drops Flame
- 2 drops Paprika
- 2 drops Marigold
- 1 small scoop Fuchsia
- 1 small scoop Champagne
- 4 tiny Chrysolite

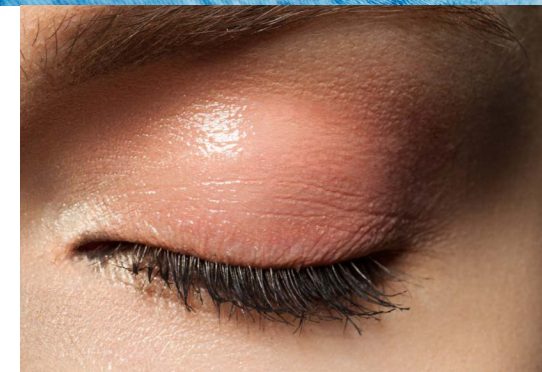


RTW
BEAUTY QUEEN LIP GLOSS
nude coral shimmer



GLOSSED OVER...Who says gloss is just for lips. The new rule: Apply it anywhere you see fit! Gloss was seen up and down the runway on eyes, lips, lashes, and cheekbones. On the eyes: wear it alone or apply over shimmery tangerine shadow.

ColorlabPrivateLabel.com • 1.800.790.2417





CUSTOM

HEARTBREAKER

- Crème Base
- 1.0 Magenta
- 1.0 Body Builder
- .50 Wineberry
- .25 +.25 Peach
- .25 +.25 +.125 Ochre

RTW

SWEET TART
sheer raspberry

CUSTOM

MIAMI BEACH

- Crème Base
- 1.5 Coral
- 1.0 Body Builder
- .25 + .25+.125 Tangerine
- .125 Brown
- .125 Magenta
- 6 tiny Champagne Frost
- 3 tiny Sand Frost

RTW

STRUT YOUR STUFF
coral

CUSTOM

FIRE ALARM

- Crème Base
- 1.0+.25 +.25 Crimson
- 1.0 Body Builder
- .50 Red Red
- .25 +.25 Magenta
- .25 +.25 Wineberry
- 6 drops Silkening Modifier

RTW

CASUAL AFFAIR
red



CUSTOM

SINGING THE BLUES

- 1 t. Saturated Blue
- ¼ t. Alabaster

RTW

VIBRANT BLUE
matte blue

CUSTOM

GOLDILOCKS

- 1 t Saturated Yellow
- ¼ t Alabaster

RTW

VIBRANT YELLOW
matte yellow

CUSTOM

LADY IN RED

- 3 tiny Onyx
- ½ t. Medium Powder
- ¼ + ¼ t Matte Red Color Adjuster
- ¼ t Pink Frost

RTW

VIBRANT RED
matte red

CUSTOM

THE IN CROWD

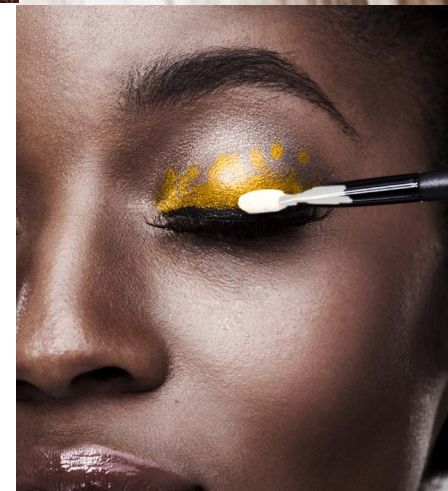
- ¾ t. Matte Red Color Adjuster
- ¾ t. Matte Yellow Color Adjuster

RTW

FRESCO
medium golden copper

B

ITTEN! THE BRIGHT LIP...It looks like the red lip is here for another season. Last season we saw the deep dark lip grace the scene. This season lighten and brighten up the lip in shades of Cherry, Raspberry and Orange. Give your lips all the attention by off-setting them with a naked all-natural face.



B

RIGHTS, CAMERA, ACTION!... There is no one single color that dominated the catwalk at Spring Fashion Week across the globes... so it's safe to say that any color under the rainbow can be seen on fresh spring faces everywhere. Splashes of vibrant reds, sun-kissed orange, yellows and intense blues appears on the eyes. Finishing out the look with a fluorescent matte red or orange lip.

Colors may vary due to monitor settings and devices.

SS•2017 TRENDS

NAIL IT!

Instead of focusing on the colorful tips of a French manicure, reverse it and draw attention to your cuticles by playing them up with a thin line of glitter along the cuticle curve for a jewel like effect. Tool required: It's a Fine Line Eyeliner Brush



NEW RTW
NAIL POLISH

MIDAS TOUCH

● Taupey Gold Metallic

Our state-of-the-art formula strengthens and moisturizes nails as it delivers long-wearing, high-shine, chip-resistant color. Free from the harsh chemicals Toluene, Formaldehyde, Formaldehyde Resin, DBP (Dibutyl Phthalate) and Camphor.

VEGAN FRIENDLY

ColorlabPrivateLabel.com • 1.800.790.2417

new SS•2017 products

NEW RTW
LIQUID MATTE LIPSTICK

8 NEW SHADES Lightweight, long wearing, plush liquid matte lipstick with a high percentage of pigments for extra color saturation. Our formula glides on smoothly and dries down slowly. A super comfortable feel on the lips with added moisture which prevents cracking. This formula is not completely kiss-proof but extremely seductive!

● cool ● warm ● neutral



Colors may vary due to monitor settings and devices.



A WARM HEART
● Warm Red



RESTLESS
● Rose



PRETTY SHADY
● Deep Purple Berry



WELL SAID
● Bright Pink



BARE IT ALL
● Nude Beige



AT FIRST GLANCE
● Nude Pink



HUGS & KISSES
● Mauve



FEEL THE HEAT
● Coral

NEW RTW
WATER-PROOF LUXURY GEL LINER
HEMATITE
Charcoal

1 NEW SHADE Mineral pencils infused with anti-aging fruit and vegetable extracts of **Avocado, Lemon, Grapeseed, Tomato, Kiwi** and **Pear** coupled with **Vitamin E** creates a formula that nourishes and hydrates the delicate eye area. The double ended gel pencil glides on the lid like a liquid liner and can be used to feather, smoke or smudge with the blending sponge. Buildable color that is smudge proof and waterproof once it is applied.



0.07oz 1.9g
waterproof

ColorlabPrivateLabel.com • 1.800.790.2417

MIX·OLOGY

SHOW US YOUR STUFF & WIN!

Send in the Mixology recipes you've created using Colorlab Private Label Custom Lip, Mineral or Foundation systems. Our staff will test the products and select a winner from all those received. The winner will receive a \$100 credit towards Colorlab products and have their product featured in our Magazine. PLEASE SUBMIT YOUR RECIPES BY **AUGUST 1, 2017**.

SEND ENTRIES TO:

Colorlab Private Label Mixology

Show Us Your Stuff

1112 Fifth Ave

Rockford, IL 61104

Email: info@colorlabprivatelabel.com

EDUCATION

VIRTUAL TRAINING

Colorlab Cosmetics is excited to announce that we are now offering Virtual Training using [ZOOM.US](https://zoom.us) for our new and existing customers. With this site, we can connect with multiple computers, allowing your employees to train from various locations, yet still be together as a group.

A convenient way to interact directly with one of our professional instructors or sales associate. The perfect tool for learning about your new custom blend system, airbrushing or a bridal make-up course. Even if you need a refresher course, we are here to help you succeed. Call your Account Representative to schedule a training today!

COLORLAB TRAINING DVDS

Training DVDs are available for Colorlab's Custom Blend Lipstick, Mineral and Foundation Systems. The training DVDs are divided into sections that coordinate with the System Manuals to replicate the face to face training experience. FOR MORE INFORMATION PLEASE CALL [800-790-2417](tel:800-790-2417).

COLORLAB EMAIL UPDATES

Email updates include promotional ideas and special sales offers. If you haven't been receiving these updates, then we don't have your email address!

PLEASE EMAIL or call your account representative to get on our list today!

RESOURCES

- ▼ [DOWNLOAD](#) the latest Colorlab Catalog
- ▼ [DOWNLOAD](#) Colorlab Magazine

