

SS-2019

color²lab
PRIVATE LABEL

FEATURED STORY

Pastel Paints

WHAT'S NEW!

7 NEW EYE SHADOWS
AU NATUREL SUNSCREEN
BEAUTY OIL
CRÈME TO POWDER FOUNDATION
NOW IN A 5G COMPACT & PAN!

PERFECTLY PINK
RADIANT REDS
STAINED GLOSSED LIPS
GOLD AND GLEAMED
PASTEL PAINTS

\$S19 SPRING TRENDS

French

SS-2019

With the winter behind us, a rebirth of refreshing color played up the runways during Fashion week. Flawless pastel eyes and painted lips dance center stage this Season.

Everything was coming up Pink with tonal washes and pretty strokes of true **pinks and mauves** equally placed across lids, lips and cheeks. Feminine and flawless, the baby doll face is refreshing and creates a natural complexion. Delightful and suitable for all skin tones.

Kissable lips pop and cheeks radiate in **bright shades of delicious reds**. A modern and updated twist on the dramatic deep reds and maroons of last season. For a subtle lip, play down your pout by dabbling with lip stains and dewy glosses. Welcome spring with **berry stained lips** or high-impact gloss. Focus on the lip and you will be on-trend this season.

The smokey eye makes an update appearance. Gone are the edgy grays and dark lids only to be replaced with **sun-kissed bronzes and splashes of gold**. Polish off the eye by blending the liner into the shadow to create this new hazy and glam eye.

It wouldn't be spring without a revival of the **pastel palette**. A wash of soft and shimmering pastel shadows create a sweet and pleasing eye. Experiment with a dusting of copper under the bottom lashes while the upper lashes are traced with **shades of violet**.

The runway trends reflect an array of fresh spring shades and summery skin. A kaleidoscope of color along with updates to classic beauty staples.

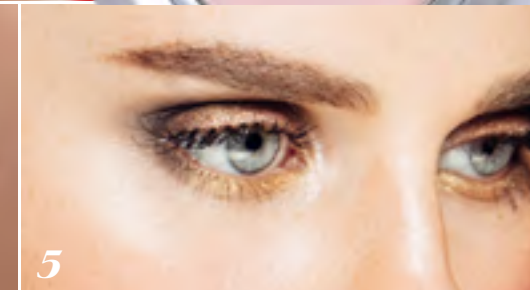
Report



2



5



3

1. Pastel Paints
2. Perfectly Pink
3. Radiant Reds
4. Stained Glossed Lips
5. Gold and Gleamed



SHOW OFF LIPSTICK

NEW RTW

COPPER PENNY EYESHADOW

New!



Pastel Paints

The perfect welcome to Spring.

Prep the eye with **Spotlight SensationalEyes** to ensure a long lasting, flawless finish. Apply shimmering bronzes and bursts of golds to lids with the **In The Shadow** brush. Neatly place a metallic shade under the bottom lash line. Application is made easy by using the **No Time Line** brush for perfectly defined liner. Apply a wash of violet shadow right above the upper lash line. Complete the look by applying gold eyeliner at the inner corners of the eyes to brighten up the eye. Take the look into the evening by adding a pinch of gold or bronze glitter to the lid.

Ready-to-wear

• cool • warm • neutral

EYES



NEW RTW

COPPER PENNY
• copper shimmer



NEW RTW

GRAPE ESCAPE
• muted violet



GILDED
• topaz shimmer



ORGANZA
• lilac w/opalescent undertone

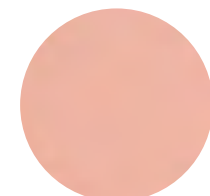


DESERT SAND
• light frost gold



FAIRY DUST
• pale lavender w/gold sparkle

BLUSH



FLUSHED
• honey peach matte

LIP



SHOW OFF
champagne shimmer



BROWN SUGAR
copper brown shimmer

GLITZ



BRONZED GLITZ



GOLD GLITZ

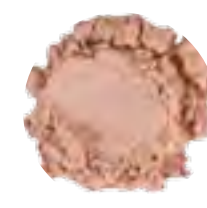
Custom Blend



BON FIRE
1/2 t Translucent Modifier
1/8 t + 3 tiny Russet Frost
1/8 t + 2 tiny Copper Frost
1/4 t Bronze Frost
2 tiny Onyx
1 tiny Garnet Frost



BOHO
3/4 t Translucent Modifier
1/4 t Amethyst
1/4 + 1/8 t Alabaster
2 tiny Crystal Frost
2 tiny Onyx
3 tiny Matte Red Color Adjuster
3 tiny Saturated Blue



BREEZY
1/2 t Translucent Modifier
1/8 t Gold Frost
1/4 + 1/8 t Sand Frost
1/4 t Alabaster
2 tiny Antique Gold Frost
1 tiny Pink Gold Frost



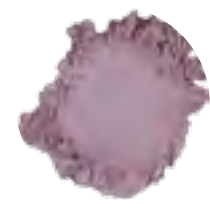
ROSE GOLD
1 1/2 t Translucent Modifier
1/4 t Light Mineral Powder
3 tiny Rubellite
4 tiny Sunstone
4 tiny Sand Frost
1 tiny Agate



MOCHA JAVA
Crème Base
.25 Peach
Drop of Mahogany
1 Small + 2 tiny Bronze Frost
4 tiny Russet Frost
3 tiny Copper Frost
2 tiny Crystal Frost
3 tiny Sand Frost
1 tiny Gold Frost
.25 Body Builder
6 drops Silkening Modifier
1 ml Moisture Additive



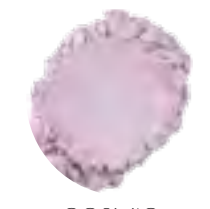
LUSTER BLUSH
1 1/2 t Translucent Modifier
1/4 t Light Mineral Powder
3 tiny Rubellite
4 tiny Sunstone
4 tiny Sand Frost
1 tiny Agate



FREE SPIRIT
3/4 t Alabaster
1/4 t Amethyst
1/8 t Rose Quartz
1/8 t + 2 tiny Opal Frost
4 tiny Violet Frost
1 tiny Onyx
1 tiny Azurite



SIZZLE
3/4 t Antique Gold Frost
1/4 t Bronze Frost
1/4 t Gold Frost
1 tiny Copper Frost



COSMIC
1/8 t Crystal Frost
1/8 t + 1 tiny Violet Frost
1/2 t Alabaster
6 tiny Opal Frost
1 tiny Fuchsia Frost
1 tiny Rose Gold Frost

Colors may vary due to monitor settings and devices.

SS-2019

PERFECTLY PINK

Create a fresh and feminine face with soft shades of pinks washed over the lids, lips, and cheek. Brush on the soft trend in shades of pink, mauve, rose and garnet for baby doll beauty. Dust on a luminizer to add dimension and brighten the skin.

LIP

RTW
CUSTOM

FASHIONISTA
deep berry pink

FRENCH ROSE

- Crème Base
- .50 Wineberry
- .25 Blackberry
- .25 + .25 + .125 x 2 Ochre
- .25 + .25 Peach
- .25 + .25 Brown
- .125 Black
- 4 tiny Opal Frost
- 3 tiny Crystal Frost
- 2 tiny Azurite Frost



EYESHADOW

● cool ● warm ● neutral

RTW



PETAL
● pale pink



- FAIRY TALE**
- 1 † Translucent Modifier
 - ¼ † Alabaster
 - 6 tiny Crystal Frost
 - 2 tiny Coral Frost
 - 3 tiny Sand Frost



IN THE PINK
● dusty pink



- BRIDAL BOUQUET**
- 1 † Translucent Modifier
 - ¼ † Alabaster
 - 4 tiny Rose Quartz
 - 2 tiny Crystal Frost



FADED ROSE
● mauve pink



- LADY GUINEVERE**
- ½ † Translucent Modifier
 - ½ † Alabaster
 - ¼ † Rose Quartz
 - ¼ † Garnet Frost
 - ¼ † Sienna Frost



GLISTERING GARNET
● plum metallic



- SENSUOUS**
- ½ † Garnet Frost
 - ¼ † Brass Frost
 - ¼ † Violet Frost

BLUSH

RTW



BELLA
pale pink shimmer



- BLUSH RUSH**
- 1 † Translucent Modifier
 - ¼ † Alabaster
 - ¼ † Light Mineral Powder
 - 4 tiny Rubellite
 - 4 tiny Crystal Frost
 - 2 tiny Coral Frost
 - 3 tiny Garnet Frost



TART
light pink shimmer



- LOVE AT FIRST SIGHT**
- ½ † Translucent Modifier
 - ½ † Alabaster
 - ¼ † Garnet Frost
 - ¼ † Moonlight Pearl
 - ¼ † Rose Gold Frost
 - 2 tiny Pink Gold Frost
 - 2 tiny Rose Quartz



BLOOM
bright medium pink shimmer



- PINKETY PINK**
- 1 † Translucent Modifier
 - ¼ † Light Mineral Powder
 - ¼ † + ¼ † Saturated Red
 - ¼ † Moonlight Pearl
 - 2 tiny Garnet Frost



ANTIQUE ROSE
matte / rosy plum



- TUDOR ROSE**
- 1 † Light Mineral Powder
 - 1 † Rose Quartz
 - 2 tiny Garnet Frost
 - 1 tiny Pink Frost

PERSONAL SHOPPER
neutral pink rose



SMELL THE ROSES

- Crème Base
- 1.50 + .25 + .25 Peach
- .25 + .25 + 1 drop Wineberry
- 6 drops Silkening Modifier
- .125 x 3 Coral
- .25 Ochre
- .125 X 4 Mahogany

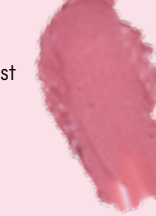


CHARMED
true cool pink shimmer



CRYSTAL ROSE

- Butter Base
- .125 + .125 Ochre
- 2 Large scoops Crystal Frost
- 6 drops Silkening Modifier
- .125 Red Red
- .25 Wineberry
- .125 + .125 Brown



SOFT SPOKEN
soft pink



BLUSHING

- Butter Base
- .25 + .125 Coral
- .25 Brown
- .125 Red Red
- .25 + .25 Peach
- .25 White
- .125 Ruby
- 1 drop Blueberry



Colors may vary due to monitor settings and devices.

ColorlabPrivateLabel.com • 1.800.790.2417

STAINED GLOSSED LIPS

Whether glossed to perfection or a painted on juicy stain, the lips seems to be the main focus this season. If you choose to only update one feature this season, let your lips do the talking. A super shiny berry or sheer popsicle-pink stained lip is a simple and effortless way to update your seasonal lip choices.

CUSTOM

AFTER DARK

- Liquid Matte Base
- .25 +.25 Brown
- .25 Wineberry
- .25 + .25 Blackberry
- .125 Black



SMOKE SIGNAL

- Smoothie Base or Glace Base
- 3 drops Wineberry
- 1 drop Black
- 2 drops Ochre
- 2 drops Blackberry



RTW



CUSTOM

TWIST OF FATE

- Liquid Matte Base
- .25 +.25 Mahogany
- .25 Blackberry
- .25 +.25 Red Red



RUBY SLIPPERS

- Smoothie Base or Glace Base
- 4 drops Ruby Red
- 2 drops Wineberry
- 8 drops Red Red
- 1 drop Black



RTW



CUSTOM

DARE YOU

- Liquid Matte Base
- .50 Blackberry
- .25 Black



WITCHCRAFT

- Smoothie Base or Glace Base
- 5 drops Blackberry



RTW



PLUM LIP STAIN



I'M NO ANGEL LIPGLOSS



BERRY LIP STAIN



CAT FIGHT LIP GLITZ



GARNET LIP STAIN



GRENADINE LIP GLITZ





GOLD AND GLEAMED

CUSTOM

LA LA LAND

- ¾ † Translucent Modifier
- ⅛ † Brass Frost
- ⅛ † Gold Frost
- ⅛ † Dark Mineral Powder
- ⅛ † + 1 tiny Antique Gold Frost
- 2 tiny Tigers Eye
- 3 tiny Sand Frost



RTW

BRONZED AMBITION EYESHADOW

warm golden bronzer shimmer



CUSTOM

GOOD NIGHT

- ½ † Translucent Modifier
- ½ † + 3 tiny Bronze Frost
- ⅛ † Copper Frost
- 2 tiny Antique Gold Frost
- 1 tiny Onyx



RTW

CHOCOLATE VELVET EYESHADOW

brown shimmer



CUSTOM

NEW DEW

- ¼ † Medium Mineral Powder
- ⅛ † Moonlight Pearl
- ¼ † Alabaster
- ⅛ † Sunlight Gold
- ¼ † Sand Frost
- ⅛ † Gold Frost
- 1 tiny Brass Frost
- 1 tiny Amber Frost
- 2 tiny Tigers Eye



RTW

BAUBLE EYESHADOW

light gold shimmer





LUXURY GEL LINER

lush black

CUSTOM

THE NEW BLACK

- ½ † Translucent Modifier
- ¾ † + ⅛ † Onyx
- ⅛ † Alabaster
- 2 tiny Dark Mineral Powder
- 1 tiny Diamond Dust
- 2 tiny Matte Black Color Adjuster



RTW

GRAPHITE EYESHADOW

dark grey w/ sparkle



CUSTOM

WINDOW DRESSING


- ½ † + ⅛ † Brass Frost
- ½ † + ⅛ † Champagne Frost
- 1 tiny Crystal Frost
- 1 tiny Silver Frost
- 2 tiny Pink Frost
- 2 tiny Onyx



RTW

SABLE EYESHADOW

brown shimmer w/ gold undertone



A twist on the classic smokey eye. Take the smokey eye from daytime to sundown by swapping the standard greys and charcoals for summery shades such as: **solid golds, gunmetals** and **bronze** eyeshadows to recreate the dramatic smokey eye. For an extra pop, finish by rimming eyes with a black liner.

New!

REDS

RADIANT

Colors may vary due to monitor settings and devices.

The perfectly painted red pout returns after being a hot topic in seasons past. The modern red mouth showcases creamy cherries and rich ruby red lips. Staying consistent with the lips, the cheeks reflect similar shades for a flushed finish. An updated twist on the vamp lip of last season.

CUSTOM

CHEERS CHEEK & LIP TINT

- ½ Crème base
- .125 + .125 Ruby Red
- .125 Red Red
- 2 tiny Sand Frost
- 1 ml Moisture Additive Package in Lip Gloss Pot



RTW

BARELY RED

Cheek & lip tint



CUSTOM

CHERRIES JUBILEE LIP STAIN

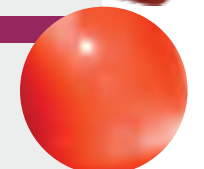
- Liquid Matte Base
- .50 + .25 Red Red
- .25 Brown



RTW

CHERRY

lip stain



CUSTOM

RASPBERRY JAM LIP STAIN

- Liquid Matte Base
- .25 x 4 Crimson
- .125 x 3 Wineberry
- .25 + .125 + .125 Brown
- 1 drop Blackberry



RTW

RASPBERRY

lip stain



CUSTOM

DESIRE LIPSTICK

- Crème Base
- 1.50 Red Red
- 1.0 + .25 Ruby Red
- 1 drop Black



RTW

WELL RED

true red



CUSTOM

"RUMORS" LIPSTICK

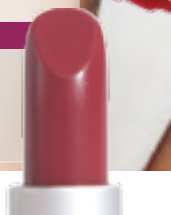
- Butter Base
- .50 + .50 Wineberry
- .25 + .25 Ochre
- .25 Brown
- .125 + .125 Blackberry



RTW

VALENTINO VELVET

cranberry



VALENTINE

Sketch stick



ColorlabPrivateLabel.com • 1.800.790.2417

Spring!

NEW PRODUCTS • 2019

● cool ● warm ● neutral

MINERAL POWDER PRESSED EYESHADOWS

NEW SHADES: Luxuriously silky pressed mineral eyeshadows glide on smoothly for long lasting crease proof color. These shades are straight off the runway and trending now.



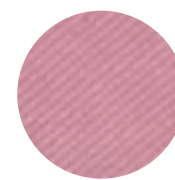
PETAL

● pale pink



IN THE PINK

● dusty pink



FADED ROSE

● mauve pink



GLISTERING GARNET

● plum metallic



COPPER PENNY

● copper shimmer



GRAPE ESCAPE

● muted violet



BAUBLE EYESHADOW

● light gold shimmer

CRÈME TO POWDER FOUNDATION 5 GRAM COMPACT AND PANS



THIS LUXURIOUS buildable foundation glides on effortlessly as a cream then turns into a silky powder that stays flawless and smooth in any environment. All 10 shades are available in original 10g compact and now 5g compact or 5g pans only. Compact is perfect for travel or touch ups.

Colors may vary due to monitor settings and devices.

AU NATUREL SUNSCREEN SPF 28 WITH ZINC, TURMERIC, VITAMIN C AND E

INSPIRED by natural beauty and eco-consciousness our mineral sunscreen is infused with powerful goodness. **Non-nano particle, natural mineral zinc oxide** protects with broad spectrum SPF28. **Avocado, Coconut** and **Sesame Oil** provide antioxidant-rich hydration. **Turmeric** and **Phyllanthus Emblica Fruit (Gooseberry) Extract** for anti-inflammatory benefits. **Shea Butter** preserves the skin's natural oils and collagen production. **Vitamins C & E** feed the skin with essential vitamins. Formulated without chemical SPF ingredients, or synthetic fragrances. Lightweight, non-greasy formula quickly absorbs into the skin and is completely translucent (no whitening effect).



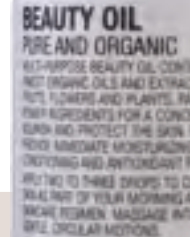
Active Ingredient: 20% Zinc Oxide

Caprylic/Capric Triglycerides, Persea Gratissima (Avocado) Oil, Zinc Oxide, Cera Alba (Beeswax), Cocos Nucifera (Coconut) Oil, Soybean Glycides, Butyrospermum Parkii (Shea) Butter Unsaponifiables, Tocopheryl, Vitamin E, Bis-Aldol, Butyrospermum Parkii (Shea) Butter Extract, Sesamum Indicum (Sesame) Seed Oil, Phyllanthus Emblica Fruit (Gooseberry) Extract, Copernicia Cerifera (Carnauba) Cera, Tetrahydrodiferuloylmethane, Tetrahydrodethoxydiferuloylmethane, Tetrahydrobisdemethoxydiferuloylmethane (Turmeric-Curcumin), Tetrahexyldecyl Ascorbate (Vitamin C), Potassium Cocoate. Net Wt. 0.50 oz./15ml

BEAUTY OIL PURE AND ORGANIC

THIS potent formula is the perfect balance between skin and oil offering immediate moisturizing, softening, conditioning and antioxidant protection. A lightweight, highly concentrated, multi-purpose beauty oil contains only the finest organic oils and extracts derived from fruits, flowers and plants. Packed with **15 power ingredients** for a concentrated boost to nourish and protect the skin. Luxurious formula provides ultimate radiance.

*Golden Simmondsia Chinensis (Jojoba) Seed Oil, *Helianthus Annuus (Sunflower) Seed Oil, *Camellia Sinensis Leaf (White Tea) Extract, *Passiflora Incarnata (Passion Flower) Extract, *Punica Granatum Fruit (Pomegranate) Extract, *Camellia Sinensis Leaf (Green Tea) Extract, *Aspalathus Linearis (Rooibos) Extract, *Lupinus Albus Seed (Lupin Seed) Extract, *Pyrus Communis (Pear) Seed Oil, *Terminalia Ferdinandiana Fruit (Kakadu Plum) Extract, *Ribes Nigrum (Black Currant) Fruit Extract, *Olive Squalane, *Sambucus Nigra Fruit (Elderberry) Extract, *Crambe Abyssinica Seed (Abyssinian) Oil, *Citrus Aurantium Dulcis (Orange) Flower Extract, Lonicera Japonica (Honeysuckle) Flower Extract, Lonicera Caprifolium (Honeysuckle) Flower Extract, Tocopherol (Vitamin E, Non-GMO derived from Sunflower) (*Certified Organic) (+Cold Pressed) Net Wt. 1 oz./30 ml



MIX IT, BLEND IT, AND SHAKE IT ALL UP!

MIX•O•LOGY

the art of creating new products through experimentation.

Need some inspiration? Our new formulary, packed with fabulous shades and formulas. Now In FULL COLOR is available for purchase. The possibilities are endless. Use it as a springboard to create your own. We'd love to hear about your mixology!

PAINT POTS

Highly pigmented, finger-paint pots that creates maximum impact with minimum effort. Cream-to-sheen in just seconds. Simply use your fingertip to add a sheer wash or dramatic color across the eyelid. Glides on and stays in place.

ROSE GOLD

- 9 pumps Fringe Benefit
- 1 large scoop Medium Mineral Powder
- 1 small scoop Moonlight Pearl Mineral Powder
- 1 small scoop Pink Gold Frost

COPPER MINES

- 8 pumps Fringe Benefit
- 1 large scoop Brass Frost
- 1 small scoop Sand Frost
- 1 small scoop Sienna Frost

SPUN GOLD

- 9 pumps Fringe Benefit
- 1 large scoop Pink Frost
- 1 small scoop Gold Frost
- 1 small scoop Light Mineral Powder

**DOWNLOAD
OUR SS19 CATALOG**

colorlabprivatelabel.com/resources/catalog.html



VIRTUAL TRAINING

We offer Virtual Training for our new and existing customers. A convenient way to interact directly with one of our professional instructors or sales associate. The perfect tool for learning about your new custom blend system, airbrushing or a bridal make-up course. Even if you need a refresher course, we are here to help you succeed. Call **1.800.790.2417** to schedule a training.

ColorlabPrivateLabel.com • 1.800.790.2417

