

colorlab

private label magazine

fall 2007

FALL LOOKS

COOL LOOKS FROM THE RUNWAYS
THE PRODUCTS YOU NEED
AND HOW TO APPLY THEM

NEW DISPLAYS

NEW PRODUCTS

SENSATIONAL EYES, EYESHADOWS,
LIPSTICK, GLOSS, CUSTOM ADDITIVES,
AND MUCH MORE

FASHION FORECAST

Couture Collection

www.colorlabprivatelabel.com

mixology FORMULAS ON PAGE 11

Mixology is all about creating new products through experimentation. Sometimes mixology happens intentionally, other times it materializes accidentally. Here are a few mixology recipes we have gathered. Use them as a springboard to create your own. We'd love to hear about your mixology!

★ WIN \$100 IN COLORLAB MERCHANDISE!!!
SEE BACK PAGE FOR DETAILS.

★ MIXOLOGY
WINNER ★

**MONOCHROMATIC
EYESHADOW & LIP GLOSS**

Brenda Azevedo, makeup artist and owner of Just B is no stranger to monochromatic looks for her bridal clients. However, while working with a particular bride, Brenda was seeking a monochromatic eyeshadow that better captured the bride's vision of her romantic look than her existing shades. She invented the eyeshadow shown above, which has since become her most popular wedding shade. As a companion to the shadow, Brenda created a lip gloss, using many of the same frosts, which she uses with Twig Sketch Stick™ and a host of other lipstick and lip liner shades.

Formulas on page 11.

Eyeshadow
Suggested Retail: \$20.00

Lip Gloss
Suggested Retail: \$22.00

**TWINKLE, TWINKLE
LIP FROST**

Try adding this sheer crystal topping to lipstick or gloss to give lips a sensational sparkle. Vary the four multi-dimensional frosts to create different reflective color effects. Enjoy the added benefit of Colorlab's exclusive Lip Plumper.

1 large scoop Twinkle Foil
1 tiny scoop Multi-Dimensional Frost (any color)
1 tiny scoop Moonlight Pearl MP
.2 ml Lip Plumper
5 drops Texturizer

*Similar to Revlon's Sugar Sugar™ Lip Topping (but with added lip plumping effects).

PACKAGE IN:
1/8 oz. jar, FA28

Suggested Retail: \$18-20

**MINERAL POWDER
MOUSSE FOUNDATION**

Geordie McDiamid of Ego Mechanix invented an amazing mineral powder mousse foundation for clients who love the benefits of mineral powder foundation but prefer a mousse or cream texture. This luxurious, smoothing mineral foundation has won over many a customer.

Formulas on page 11.

Suggested Retail: \$50-58

**BRIGHT EYES MINERAL
POWDER CONCEALER**

Makeup artist Erica Rowe of Total Bliss Salon & Spa invented a trio of eye primers that prevent creasing and fading and keep eyeshadow looking fresh all day. Created in matte, shimmer and natural shades for different effects.

Basic Eye Primer Recipe
1 large scoop Coverage Enhancer
2 pumps Fringe Benefit
1-2 pumps Toner or Foundation
Up to 1/4 t. + 1/8 t. Frost/MP

Formulas on page 11.

Suggested Retail: \$14-16

Please note: In our Spring 2007 newsletter, we neglected to give credit to Audra Smith of Tievoli Salon & Retreat for her mixology submission "Color Intensity". We regret the error.

new products

A sweet selection of new ready-to-wear and custom products



1 LASH OF LUXURY MASCARA

Lash of Luxury Mascara lengthens, strengthens and volumizes lashes uniformly in a single stroke. Smudge-proof, water-resistant and long-wearing, this mascara features a unique technology combining silky smooth lash building polymers with vitamins A, C & E, seaweed protein and algae extracts.

2 ACTIVE FOUNDATION COMPLEXES

for the Custom Blend Foundation System. **COPPER PEPTIDE** Multi Mineral Complex, this multi mineral complex contains copper, manganese and zinc. These minerals stimulate collagen and elastin formation, diminish fine lines, firm the skin, improve skin strength, increase oxygenation and neutralize free radicals by stimulating the enzymatic function of antioxidant superoxide dismutase.

ULTRA SOOTHING Botanical Complex, this botanical complex contains 6 synergistic botanicals: Butcher's Broom, Hydrocotyle, Marigold, Horse Chestnut, Licorice and Hydrolyzed Yeast Protein. This combination of botanicals soothes,

reduces redness and inflammation (rosacea) and improves circulation. Ultra soothing also improves under eye darkness by up to 300% when used in concealer.

ULTRA FIRMING Botanical Complex, this botanical complex contains soy protein which provides an immediate firming and tightening 'flash' effect that will last throughout the day. The soy protein also softens and smoothes the skin giving it a more radiant appearance.

3 SENSATIONALEYES EYE PRIMER

New shade by Popular Demand! Medium SensationalEyes Eyeshadow Primer. Create the perfect canvas for long-lasting, crease-proof eyeshadow with SensationalEyes eyeshadow primer. Utilizing the latest technology for maximum effectiveness, SensationalEyes is formulated with Hibiscus Esculentus Complex, a vegetal alternative to Botox, that when applied daily has been proven in clinical trials to reduce wrinkles by 26%.

4 NEW FALL RTW SHADES

Straight from the Couture Collection Great new shades from our ready-to-wear couture collection.

EYESHADOWS Velvety smooth muted metallic mineral eyeshadows made from pure micronized minerals keep eyes looking fabulous: Fifth Avenue (neutral, deep, matte mustard yellow), Berry Exclusive (cool, pink, berry shimmer), Catwalk (cool, blackened bronze).

BLUSH Pure micronized minerals give cheeks a soft healthy flush: St. Tropez (neutral, light nude, shimmer).

LIPSTICK Botanically based and infused with vitamin E are two great new lipsticks: Diorable (cool, light violet mauve, sheer shiny) and Fashionista (cool, deep berry pink, smooth creamy).

LIP GLOSS Colorlab's new RTW lip gloss. So Coco, (warm) honey nude, is Vitamin E infused, with a high lacquered shine.

seasonal looks

RTW products and brushes are listed in *UPPERCASE ITALICS*. Custom products are listed in *UPPERCASE*. Custom product formulas are listed on page 11.

COUTURE COLLECTION



Straight from the runway comes this season's RTW look. The monochromatic face showcases the vibrant eye. Eyes are bathed with neutralized metallics while lips are kept natural with muted mauve or bright plum.

APPLICATION DIRECTIONS

FOUNDATION Concealer, Powder: As needed
CHEEKS Apply *ST. TROPEZ BLUSH* to cheekbone with *GIVE AND TAKE BRUSH* to contour. Add to apple of cheek and blend up with *YOU'RE BLUSHING BRUSH*.
EYES Apply *FIFTH AVENUE SHADOW* to entire lid with *IN THE SHADOW BRUSH*. Add *BERRY EXCLUSIVE* shadow to outer 3/4 of crease with same brush and blend. Apply *CATWALK SHADOW* with the angle side of *BROW WOW BRUSH* thickly lining the outer 3/4 of the lid and blend on outer 1/2 of lower lashline. Line the entire top lid and outer 3/4 of lower lashline with *MINK SKETCHSTICK™*. Apply *BLACK/BROWN MASCARA* to upper and lower lashes.
LIPS Line lips with *TULIP SKETCHSTICK™*. Apply *DIORABLE LIPSTICK* to lips (for deeper tone, apply *FASHIONISTA LIPSTICK*). Add *SO COCO LIP GLOSS* to lips for shine.



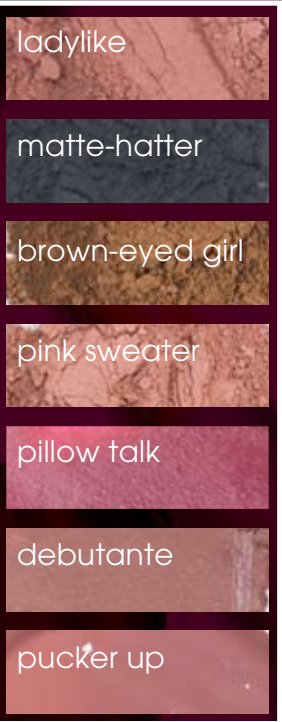
PREPPY GIRL



Independence and confidence resound in contradictions. The sultry eye is contrasted with the pretty pink cheek. Lips can be natural and pink to keep focus on the eyes or dramatic and red for a glamorous twist. This look reflects the matte trend seen on this season's runways.

APPLICATION DIRECTIONS

FOUNDATION Concealer, Powder: As needed
CHEEKS Apply *PINK SWEATER BLUSH* to apple of cheek with *YOU'RE BLUSHING BRUSH*, then blend up cheekbone softly up to the browbone.
EYES Apply *LADYLIKE SHADOW* to entire lid with *DETAIL ORIENTED BRUSH*. Add *MATTE HATTER SHADOW* to outer crease of eye, then blend on the outer 1/2 of the lower lashline with *SOCKET TO ME BRUSH*. Blend *BROWN-EYED GIRL SHADOW* from inner crease to outer crease with *ALL OVER IT BRUSH*. Apply *BLACK/BROWN MASCARA* to upper and lower lashes.
LIPS Line lips with *TWIG SKETCHSTICK™*. Fill lips with *DEBUTANTE LIPSTICK* (for deeper tone, apply *PILLOW TALK LIPSTICK*). Apply small amount of *PUCKER UP LIP GLOSS* to lips for texture.



MOD SHOPPER



Classic beauty meets fashion forward. Pale pinks and neutrals paired with wine reds and soft charcoal create a complementary look that flatters any complexion. The mix of vintage and contemporary shades create a visage that is modern, but not trendy; elegant, but not stuffy.

APPLICATION DIRECTIONS

FOUNDATION Concealer, Powder: As needed
CHEEKS Apply *LATTE NECESSITY BLUSH* to apple of the cheek with *YOU'RE BLUSHING BRUSH*. Blend up cheekbone softly to brow area.
EYES Apply *OVERRATED PASHMINA SHADOW* to entire lid with *DETAIL ORIENTED BRUSH*. Add *BLACK FRIDAY SHADOW* to outer crease of eye then blend below lid with *SOCKET TO ME BRUSH*. Sweep *CASHMERE ROSE SHADOW* across the browbone with *ALL OVER IT BRUSH*. Line top and bottom lashlines completely with *VINTAGE SKETCHSTICK™*. Apply *BLACK MASCARA* to upper and lower lashes (two coats).
LIPS Line lips with *MAUVE SKETCHSTICK™*. Fill lips with *GIMME CHOO LIPSTICK* (for deeper tone, apply *SAXONY LIPSTICK*). Apply small amount of *GOTTA HAVE IT LIP GLOSS* to lips for a luminous shine.



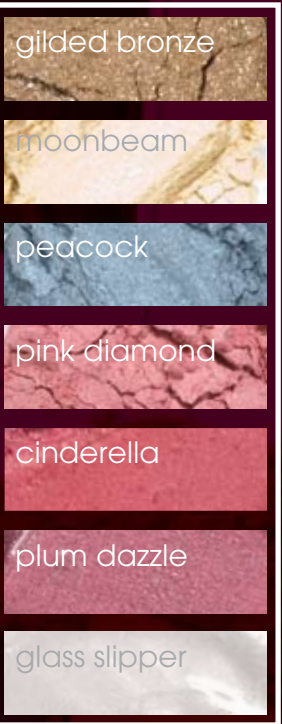
METALLIC PRINCESS



All dressed up with somewhere to go. Holiday 2007's eyes sparkle with precious hues of azure, bronze and gold. Cheeks look fresh blushed in pink with a soft golden tinge. Lips are unforgettable in pink gold or garnet topped with sheer golden glimmer gloss for a final flourish.

APPLICATION DIRECTIONS

FOUNDATION Foundation, Concealer: As needed
POWDER Add a light dusting of a luminous custom blend translucent powder to face after foundation and concealer for an incandescent look.
CHEEKS Apply *PINK DIAMOND BLUSH* with *YOU'RE BLUSHING BRUSH* to apple of cheek and blend.
EYES Apply *GILDED BRONZE SHADOW* to lid and crease of eye and blend with *IN THE SHADOW BRUSH*. Blend *MOONBEAM GLITZ SHADOW* on lid from very inner corner of eye to outer corner on browbone. Add *PEACOCK SHADOW* on lower lashline from inner to outer corner with *DETAIL ORIENTED BRUSH*. Line inner and outer rim of top and bottom lids with *CASHMERE SKETCHSTICK™*. Insert individual false eyelashes to top lashes. Add *BLACK MASCARA* to upper and lower lashes (two coats).
LIPS Line lips with *SUGARPLUM SKETCHSTICK™*. Fill lips with *CINDERELLA LIPSTICK* (for deeper tone, use *PLUM DAZZLE LIPSTICK*). Add *GLASS SLIPPER LIP GLOSS* to bottom of top lip and top of bottom lip for "pouty" effect.



custom fall collection

Colorlab’s custom fall collection represents the season’s contrasting trends of beauty. Our Mod Shopper takes a contemporary twist on classic beauty. Preppy Girl is independent, confident and sultry. Our Holiday look, Metallic Princess, sparkles with precious hues and pretty pinks. For more information, please contact your Account Representative.

MOD SHOPPER	METALLIC PRINCESS	PREPPY GIRL
overrated pashmina	gilded bronze	ladylike
black friday	moonbeam	matte-hatter
cashmere rose	peacock	brown-eyed girl
latte necessity	pink diamond	pink sweater
saxony	cinderella	pillow talk
gimme choo	plum dazzle	debutante
gotta have it!	glass slipper	pucker up

READY-TO-WEAR CONVERSIONS FOR THE SEASONAL RTW DISPLAY

MOD SHOPPER	METALLIC PRINCESS	PREPPY GIRL
Wine	Golden Taupe	Shy
Charcoal	Ingot	Jet
Baby Doll	Wink	Tierra
Barely Plum	First Blush	Rose Silk
Ciao Bella	Pout	Voodoo
Celebrity Ball	Always A Bridesmaid	Unearthed
Live It Up	All That Glitters	Tea Time

HIGHLIGHTER DISPLAY - PALETTE

A great way to increase impulse sales. The same quality POP Display base used for the Highlighter display can be quickly converted to this setup by changing one template. It grabs attention and sales! For RTW & Custom.

HIGHLIGHTER DISPLAY - WONDERBROW

This sleek, contemporary, Lucite display promotes your featured products in an easy to change design. Changeable templates highlight your product focus. For RTW & Custom. Small enough to be placed at the cash wrap to increase impulse purchases.

HIGHLIGHTER DISPLAY - TIMEBOMBS

Another great way to increase impulse sales. The same quality POP Display base used for the Highlighter display can be quickly converted to this setup by changing one template. It grabs attention and sales! For RTW & Custom.



SEASONAL SHOWCASE DISPLAY

Colorlab’s Showcase display is beautiful and versatile. It can used to display either custom or RTW products with the change of a template.

New Active Foundation Complexes

FOR THE CUSTOM FOUNDATION SYSTEM

COPPER PEPTIDE- Multi Mineral Complex

This multi mineral complex contains copper, manganese and zinc. These minerals stimulate collagen and elastin formation, diminish fine lines, firm the skin, improve skin strength, increase oxygenation and neutralize free radicals by stimulating the enzymatic function of antioxidant superoxide dismutase. Use 1.0 ml in your custom blend foundation. Ingredients: Yeast Extract, Cupric Sulfate, Manganese Sulfate and Zinc Sulfate

ULTRA SOOTHING- Botanical Complex

This botanical complex contains 5 synergistic botanicals: Butcher’s Broom, Hydrocotyle, Marigold, Horse Chestnut, Licorice and Hydrolyzed Yeast Protein. This combination of botanicals soothes, reduces redness and inflammation (rosacea) and improves circulation. Ultra soothing also improves under eye darkness by up to 300% when used in concealer. Use 1.0 ml in foundation and 0.2 ml in concealer. Ingredients: Propylene Glycol, Ruscus Aculeatus Root Extract (Butcher’s Broom) Centella Asiatica Extract (Hydrocotyle), Panthenol, Water, Calendula Officinalis Flower Extract (Marigold), Hydrolyzed Yeast Protein, Aesculus Hippocastanum Extract (Horse Chestnut), Ammonium Glycyrhizate (Licorice Root)

ULTRA FIRMING- Botanical Complex

This botanical complex contains soy protein which provides an immediate firming and tightening ‘flash’ effect that will last throughout the day. The soy protein also softens and smoothes the skin giving it a more radiant appearance. Use 1.0 ml in a foundation. Ingredients: Soy Protein Phthalate

COPPER PEPTIDE- Multi Mineral Complex

Copper is a trace element found in every cell. In products applied to the skin, it is combined with small protein fragments called peptides. Copper peptides enhance wound healing, stimulate production of collagen and enhance the action of antioxidants. Copper Peptides are purified from live yeast cell cultures enriched in trace elements of Copper, Manganese and Zinc. The yeast converts the trace elements into low molecular weight metal peptides complexes which allows them to be rapidly absorbed into the skin for excellent skin penetration.



Mineral Power

Trace elements of copper, manganese and zinc increase the antioxidant capacity of the human skin, protect from UV damage and play a crucial role in reducing oxidative stress. These elements also increase the rejuvenating enzymes in the skin.

Since copper peptides optimize healing and improve skin remodeling, they can augment the effect of treatments based on various forms of controlled skin injury. In particular, copper peptides can be useful after various forms of laser resurfacing, dermabrasion, and chemical peels.

Copper

Reduces fine lines and wrinkles
Firms and rejuvenates the skin
Improves skin strength
Reduces skin sagging
Simulates natural antioxidant enzymes
Required for superoxide dismutase (antioxidant) activity

Manganese

Protects against oxidative stress
Aids wound healing
Required for superoxide dismutase (antioxidant) activity

Zinc

Firms and rejuvenates the skin
Helps repair DNA
Protects against sunburn cell formation
Aids wound healing
Neutralizes free radicals
Required for superoxide dismutase (antioxidant) activity

FORMULAS

ANTIOXIDANT, ENVIRONMENTAL STRESS DEFENSE FOUNDATION TINT WITH SPF

This formula was created with Copper Peptide Multi-Mineral complex for clients concerned with wrinkle prevention.

- 10 ml Matte Foundation
- 10 ml Thinner
- 10 ml Sunscreen
- 1 ml Fringe Benefit
- Toners to match skin
- 1 ml Copper Peptide Multi-Mineral Complex

BRIGHTENING CONCEALER

Use this concealer to soothe and lighten delicate under eye skin.

- 2 large scoops Coverage Enhancer
- 1 small scoop Botanical Crème Complex
- 1 pump Fringe Benefit
- .2ml Ultra Soothing Botanical Complex
- Toners for color match

FIRMING MOUSSE FOUNDATION, FOR ALL SKIN TYPES

This formula was created with Botanical Firming complex for mature skin with loss of elasticity.

- 25 ml O/F Foundation
- 5 ml Fringe Benefit
- 5 drops Thickener
- Toners to match skin
- 1 ml Ultra Firming Botanical Complex

SOOTHING FOUNDATION

This formula was created with Ultra Soothing Botanical complex for clients with rosacea or “ruddy” skin tone.

- 25 ml Matte Foundation
- 5 ml Pearl
- .5 ml Hydrator
- Toners to match skin
- 1 ml Ultra Soothing Botanical Complex



FALL FORECAST

This fall is a homecoming of the Lady. Designers focus on this season's bold vibrant colors and on the sophisticated silhouettes of glamorous ladies such as Jackie O and Audrey Hepburn. Don't be afraid to match a fabulous bag to your favorite pair of Manolos or complete your look with a high fashion scarf. Feel like Holly Go Lightly with the return of the glove, which is now detailed with its own jewelry.

Take a walk on the wild side with long haired furs, mostly goat and fox. Wooly accessories such as shoes, coats and jackets can bring the cavewoman out in each of us. Even though designers' main theme is refinement, feel free to add a raw edge to your style.

Fall's color palette is ravishing; it ranges from rose to wine, curried yellows to olive greens, and luscious reds to burnt oranges. Typical grays and browns have been reinvented. Grays have been infused with violet and deep turquoise and browns are rich and warm at the

same time. Create your own autumn foliage with the plethora of colors available to you.

Fabrics are body conscious and wearable with a polished finish. Classic wools, silky puckered materials, knitwear and tweed (of course), are among the most popular. Shiny, sleek gold and silver fabrics are preferred to ones that are embellished with sequins and studs.

Color and classic styles rock the catwalk and make up is no different. For an elegant look that Coco would love, try refreshed neutrals and red wines on eyes and cheeks with soft pink highlights. Show them your conviction to the classics with a sensual eye and red dramatic lip. Metallic colors strut their stuff on the runway, too. Soft gold, garnet and bronze shimmers allow you to add luminosity to your face. This fall, you can be a Hollywood glamour puss one day and have a clean, bare minimalist look the next and still be keeping up with the Joneses.



colors & formulas

Follow the trends for fall 2007. Use these colors to update your display for fall with the trend looks suitable for your clientele

lipstick

cinderella	debutante	diorable	fashionista
gimme choo	pillow talk	plum dazzle	saxony

lip gloss

glass slipper	gotta have it	pucker up	so coco
---------------	---------------	-----------	---------

blush

latte necessity	pink diamond	pink sweater	st tropez
-----------------	--------------	--------------	-----------

eye shadow

berry exclusive	black friday	brown eyed girl	catwalk
cashmere rose	fifth avenue	moonbeam	ladylike
matte hatter	gilded bronze	overrated pashmina	peacock

formulas

key: lipstick lip gloss blush eye shadow

CINDERELLA LIPSTICK

Crème base
.25 Wineberry
2 large scoops Pink Gold Frost
3 tiny scoops Twinkle Foil
2 ml Moisture Additive
6 drops Silkening Modifier

DEBUTANTE LIPSTICK

Matte base
.50 + .50 Peach
.25 + .25 Red Red
2 large scoops Agate MP
2 ml Moisture Additive
6 drops Silkening Modifier

DIORABLE LIPSTICK

Butter base
.50 Peach
.125 + .125 Coral
.125 + .125 Cocoa
.125 White
.125 Brown

FASHIONISTA LIPSTICK

Crème base
.50 Magenta
.25 + .25 + .25 + .25 Brown
.125 + .125 + .125 Mahogany
1 small scoop Fuschia Frost
1 ml Moisture Additive

GIMME CHOO LIPSTICK

Butter base
.5 + .25 Coral
.25 Cocoa
3 drops Peach

PILLOW TALK LIPSTICK

Matte base
1.0 Red Red
.125 Ruby Red
.125 Black
2 large scoops Saturated Red MP
2 ml Moisture Additive

PLUM DAZZLE LIPSTICK

Butter base
25 + .125 + .125 Wineberry
.50 + .25 + .25 Blackberry
1 large scoop Champagne

SAXONY LIPSTICK

Crème base
.25 + .125 Wineberry
.25 + .125 Blackberry
.25 + .125 Peach
.25 + .125 Cocoa

GLASS SLIPPER GLOSS

Glacé base
2 tiny scoops Pink Frost
2 tiny scoops Chrysolite Frost
1/2 tiny scoop Gold Frost
2 tiny scoops Twinkle Foil

GOTTA HAVE IT GLOSS

Gloss base
3 drops Coral
1 drop Cocoa
1 drop Peach
2 tiny scoops Morganite Frost

PUCKER UP GLOSS

Smoothie base
3 drops Peach
1 drop Red Red
1 drop Mahogany
1 drop Brown

SO COCO GLOSS

Smoothie Base
6 drops Brown
4 drops Peach
4 tiny scoops Fuschia Frost
6 tiny scoops Chrysolite Frost
1ml Moisture Additive
6 drops Silkening Modifier

LATTE NECESSITY BLUSH

1 t. Translucent Modifier MP
1/4 t. + 1/8 t. Agate MP
1/8 t. Rose Quartz MP
1/8 t. Tourmaline MP

PINK DIAMOND BLUSH

1/2 t. Translucent Modifier MP
1/4 t. + 1/8 t. Tourmaline MP
1/4 t. + 1/8 t. Pink Gold Frost
1/4 t. Sand Frost
1/4 t. Champagne Frost

PINK SWEATER BLUSH

1 1/4 t. Translucent Modifier MP
1/4 t. + 1/8 t. Tourmaline MP
1/8 t. Dark MP
1/8 t. Saturated Red MP
1/8 t. Saturated Yellow MP

ST TROPEZ BLUSH

1 t. Translucent Modifier MP
1/2 t. Dark MP
1/4 t. Pink Gold Frost MP
1/4 t. Sand Frost MP
1/8 t. Fuschia Frost MP
1/2 t. Frost Binder

BERRY EXCLUSIVE SHADOW

1/8 t. Pink Gold Frost
1/8 t. Fuschia Frost
1/4 t. Tourmaline MP
1 tiny scoop Onyx MP
1 tiny scoop Bronze Frost
1/4 t. Crystal Frost

BLACK FRIDAY SHADOW

1/2 t. + 1/8 t. Onyx MP
1/2 t. + 1/8 t. Alabaster MP

BROWN EYED GIRL SHADOW

1/2 t. Dark MP
1/2 t. Tiger's Eye MP
1/2 t. Medium Coverage Intensifier MP
2 tiny scoops Onyx MP

CATWALK SHADOW

1/4 + 1/8 t. Onyx MP
1/4 t. Bronze Frost MP
1/4 t. Crystal Frost

CASHMERE ROSE SHADOW

1/2 t. Sunlight Gold MP
3/4 t. Moonlight Pearl MP
1/8 t. Tourmaline MP

FIFTH AVENUE SHADOW

1/2 + 1/8 t. Medium Coverage Int. MP
1/8 t. Amber MP
1/8 t. Dark MP
1/4 t. Alabaster MP

GILDED BRONZE SHADOW

1/4 t. + 1/8 t. Chrysolite Frost
1/4 t. + 1/8 t. Pink Frost
1/8 t. + 2 tiny scoops Gold Frost
1/8 t. Twinkle Foil

LADYLIKE SHADOW

1/2 t. Medium Coverage Intensifier MP
1/4 + 1/8 t. Tourmaline MP
1/8 t. Dark MP
1 tiny scoop Onyx MP

MATTE HATTER SHADOW

1 t. Onyx MP
1/4 t. + 1/8 t. Medium Coverage Intensifier MP

MOONBEAM SHADOW

1/4 t. Saturated Yellow MP
1/4 t. + 1/8 t. Bronze Frost
1/4 t. + 1/8 t. Gold Frost
1/8 t. Twinkle Foil
1/8 t. Nugget Foil

OVERRATED PASHMINA ES

1/4 t. Onyx MP
2 tiny scoops Tourmaline MP
1/2 t. Garnet Frost
1/2 t. Rose Quartz MP

PEACOCK SHADOW

1/2 t. Silver Frost
1/2 t. Azurite Frost
1/8 t. Twinkle Foil

mixology formulas

MONOCHROMATIC EYESHADOW

2 small scoops Moonlight Pearl MP
1 small scoop Sunlight Gold MP
2 tiny scoops Morganite MDF
2 tiny scoops Champagne Frost
2 tiny scoops Pink Frost
2 tiny scoops Pink Gold Frost
1 tiny scoop Alabaster MP
1 tiny scoop Crystal Frost
Package in: 3 g jar, PP2

MONOCHROMATIC LIP GLOSS

1/2 Smoothie base
1/2 Glacé base
2 tiny scoops Morganite MDF
2 tiny scoops Champagne Frost
2 tiny scoops Pink Frost
2 tiny scoops Pink Gold Frost
2 drops Pink Champagne Flavor
Package in: wand applicator, LC14

MINERAL POWDER MOUSSE FOUNDATION

4 t. Mineral Powder base*
20 ml Matte Liquid Foundation base*
1/4 t. Moonlight Pearl MP
.5 ml Hydrator
.5 ml Texturizer
Mineral Powder toners to match skin*
*Color bases and toners in shades tailored to client skin tones.

Place mineral powder base into plastic beaker. Mix liquid foundation, hydrator and texturizer in small plastic cup. Slowly stir liquid ingredients into mineral powder in beaker. Add Moonlight Pearl and mix. Adjust color to match skin tone with mineral powder toners (tiny scoops).
Package in: 1 oz. jar

BRIGHT EYES MINERAL POWDER CONCEALER

Basic Eye Primer Recipe
1 large scoop Coverage Enhancer
2 pumps Fringe Benefit
1-2 pumps Toner or Foundation
Up to 1/4 t. + 1/8 t. Frost/MP

Eye Bright Primer (matte)
1 large scoop Extra Light Coverage Enhancer
2 pumps Fringe Benefit
1 pump White Toner
1/4 t. Alabaster
1/8 t. Eye Brightening Complex

Eye Bright Primer (shimmer)
1 large scoop Extra Light Coverage Enhancer
2 pumps Fringe Benefit
2 pumps Pearl Toner
1/8 t. Champagne Frost
1/4 t. Crystal Frost
1/8 t. Eye Brightening Complex

Natural (with a hint of shimmer)
1 large scoop Light Coverage Enhancer
2 pumps Fringe Benefit
2 pumps Pearl Toner
1/8 t. Champagne Frost
1/8 t. Sand Frost
1/8 t. Crystal Frost
1/8 t. Eye Brightening Complex
Package each in: 1/8 oz. jar



Beauty Through the Ages

We've listed these tips according to age range. From twenties to sixties and beyond, we've got a tip for everyone.

20's

EYE SHADOW Play up your eyes by using light, luminous shimmer shades such as Colorlab's Moonbeam or Ladylike around the inner corners of your eyes and blend out to create a fun, flirty look!

30's

LIPSTICK It's all about those awesome lips! Choose a shade to "show off" your great smile by adding a touch of color this season such as Colorlab's Saxony or Diorable.

40's

BLUSH It's time to update your natural tone blush with a little pizzazz. Choose a natural tone with a touch of luminous and an added soft tone of pink, peach or berry to brighten up your entire look. Try one of Colorlab's new blush colors for the season such as Latte Necessity or Pink Diamond.

50's

GLOSS Yes, gloss!! Soften the look of the little lines that are starting to appear on the lips once your lipstick is applied by adding a hint of soft gloss to the top of the bottom lip and bottom of top lip (be sure not to extend the gloss to the outer rim of the lips to avoid any bleeding of the gloss). Colorlab's Pucker Up, So Coco or Gotta Have It! are all great choices to start with.

60's +

LIP LINER As we age, the lip line fades causing the lips to "fade" into the skin and lose their shape. Replace what nature has faded with a great lip liner such as Colorlab's sketchsticks™ for lips. Liner can also be used to fill-in the lips as well as reshape them for longer lasting color.

Be smart this season – stock up on the best products for your clients for Fall!

UPCOMING TRADE SHOWS

Discover the magic of Colorlab Private Label's custom blend cosmetics experience. Watch how cosmetics are custom blended at the cosmetics counter with and for the client. Learn how you can create your own line of custom or ready-to wear cosmetics. And don't forget to check out the newest innovative custom and ready-to-wear products that we have recently released.

Sep. 29 - Oct. 1, 2007

International Cosmetics & Spa Conference (IECSC)

Orlando, FL

Booth # 339



For the 3rd year in a row, Colorlab was ranked as one of the fastest growing inner city companies on Inc. Magazine's Inner City 100 list.

COLORLAB TRAINING

If you currently sell or have recently purchased any of Colorlab's custom blend systems (lipstick, foundation, or mineral powder) you are eligible for a free training session at Colorlab corporate headquarters. Trainings may also be scheduled at your location for a nominal fee. To schedule a training, call 1-800-790-2417.

CONSULTING SERVICES

If you've ever wondered how you can...

- launch the Colorlab line
- raise in-house awareness of your cosmetics
- re-launch and re-energize your makeup line
- boost sales through events and promotions
- approach clients with cosmetics offerings
- best train your makeup staff

...just ask. Colorlab can help you create, develop and grow a successful cosmetics business. For more information call 1-800-790-2417.

BULK PRICING ON READY-TO-WEAR SHADES

Your favorite ready-to-wear shades are available in bulk. Call us at 1-800-790-2417.

CONTRACT MANUFACTURING

www.colorlabmanufacturing.com

Create your own exclusive cosmetics line infused with Colorlab's technical knowledge and commitment to quality. Contract manufacturing is available in our state-of-the-art facility in Williston, VT. Our plant was designed to fulfill your research, formulation and manufacturing needs...from lipstick, lip gloss, eyeshadow and foundation to skin care, body care and beyond. Take advantage of our flexible production capacity. Our equipment can accommodate runs from small to large. We look forward to the opportunity to help you achieve your business goals. For more information, please call 1-800-790-2417.

ONLINE CATALOG & NEWSLETTER

Visit Colorlab's online catalog and find newsletter images you can print at www.colorlabprivatelabel.com. Navigate to the catalog or the newsletter.

MIXOLOGY (SHOW US YOUR STUFF & WIN!)

Send in the mixology recipes you've created using Colorlab Private Label's custom lip, mineral or foundation systems. Our staff will test the products and select a favorite from all those received. The winner will receive \$100.00 in Colorlab products and have their product featured in our spring/summer newsletter. Please submit your spring/summer 2008 recipes by October 20, 2007.

Email entries to your Sales Representative or send them to:

Colorlab Cosmetics/Show Us Your Stuff

1112 Fifth Avenue

Rockford, Illinois 61104

LET'S KEEP IN TOUCH

Send us your email address if you would like to be included in information about new product launches, promotions, custom recipes, etc.

www.colorlabprivatelabel.com

COLORLAB COSMETICS
1112 FIFTH AVENUE
ROCKFORD, IL 61104

PRST STD
US POSTAGE
PAID
ROCKFORD, IL
PERMIT NO. 1244