



Color<sup>2</sup>Lab<sup>+</sup>  
PRIVATE LABEL

2024 TREND

Color of the Year 2024  
Peach Fuzz

Perfect  
in

PEACH FUZZ



2024 TREND

**P**ANTONE 13-1023 PEACH FUZZ reflects the past yet has been rephrased to have a contemporary ambiance. PEACH FUZZ is Pantone's official color of the year for 2024. It is a soft and airy shade that falls between creamy pink and a soft orange. It is both sophisticated and contemporary. It is sensual and sweet and provides a sense of calm and renewal. The color was chosen to represent a new modernity and is centered around the experience of enriching and nurturing the mind, body and spirit. — Let PEACH FUZZ bring beauty to your business this year.



Soft & Comfy



LIPSTICKS

**PEACH FUZZ HUES FOR ALL!** Blending shades by depth, from light to dark, is a great approach to ensure versatility and inclusivity. This method allows for a range of tones that can appear flattering, flirty, and feminine on the lips of individuals with different skin tones. Our lipstick formulas are infused with Vitamin E and Jojoba Oil to deliver the ultimate smoothing and conditioning benefits.

**PEACH CLOUDS**  
light beige peach  
matte

**CB**  
Matte Base  
• 1.5 Peach  
• .25 + .25 Brown  
• 2 lg. scoops Champagne Frost  
• 2 ml Moisture Additive  
• 6 drops Silkening Modifier  
• 4 drops Vanilla  
• 2 drops Peach Sorbet

**PEACH SUNSET**  
medium nude coral  
smooth creamy

**CB**  
Crème Base  
• 1.0 Peach  
• .75 Coral  
• .50 + .25 Brown  
• 1 lg. scoop Champagne Frost  
• 1 ml Moisture Additive  
• 6 drops Silkening Modifier  
• 4 drops Vanilla  
• 2 drops Peach Sorbet

**PEACHY SANDS**  
deep peach bronze nude  
matte

**CB**  
Matte Base  
• 1.5 Peach  
• .50 Cocoa  
• .25 + .25 Mahogany  
• .25+.25 Coral  
• 1 lg. scoop Champagne Frost  
• 1 sm. scoop Antique Gold Frost  
• 1 ml Moisture Additive  
• 6 drops Silkening Modifier  
• 4 drops Vanilla  
• 2 drops Peach Sorbet

PEACH FUZZ

**ADD A SUBTLE FLARE WITH A GLOSS** If you don't want to commit to the opacity of a lipstick or liner, you are in luck. Peachy lip gloss is another excellent way to include **PEACH FUZZ** in a subtle but flirtatious way. Our lip glosses feature **Green Tea Extract** and **Vitamin E** for their protective and rejuvenating benefits.

**ICED PEACH**  
light peach with an icy shimmer

**CB**  
Lip Polish Base  
• 6 drops Peach  
• 1 drop Brown  
• 5 drops White  
• 1 sm. scoop Champagne Frost  
• 4 tiny scoops Diamond Dust  
• 3 drops Silkening Modifier  
• 3 drops Citrus

**MODERN PEACH**  
medium coral with beige undertone

**CB**  
Lip Polish Base  
• 4 drops Peach  
• 3 drops Coral  
• 2 drops Brown  
• 1 sm. scoop Champagne Frost  
• 3 drops Silkening Modifier  
• 1 drop Peach Sorbet  
• 2 drops Vanilla

**LUXURY PEACH**  
deep bronzed peach

**CB**  
Lip Polish Base  
• 8 drops Peach  
• 5 drops Cocoa  
• 2 drops Mahogany  
• 2 drops Coral  
• 1 sm. scoop Champagne Frost  
• 2 tiny scoops Antique Gold Frost  
• 3 drops Silkening Modifier  
• 2 drops Citrus  
• 1 drop Vanilla

GLOSSES



# PEACH FUZZ FOR ALL!

SE  
EY  
E

Our luxurious mineral powders are made exclusively from micronized minerals. They provide long-lasting coverage with a lightweight natural look and feel. Their exceptional adherence and crease resistance keeps makeup looking fresh all day. The natural pigments easily adhere to the skin, which gives our mineral powder its long-lasting effects.



PEACH CHAMPAGNE  
light neutral beige peach

CB

- ½ t Translucent Modifier
- ½ t Moonlight Pearl
- ¼ t Champagne Frost
- ⅓ t Coral Frost
- 2 tiny Yellow Color Adjuster
- 1 tiny Rubellite
- 1 tiny Alabaster
- 2 tiny Diamond Dust



OUT PEACHED  
medium muted coral

CB

- ¾ t Sunlight Gold
- ⅓ t Translucent Modifier
- ⅓ t Coral
- 2 tiny scoops Agate
- 1 tiny scoop Bronze
- 5 tiny scoops Fire Opal



GLAZED PEACH  
deep terracotta with  
deep warm peach tones

CB

- ½ t Matte Red Color Adjuster
- ½ t Matte Yellow Color Adjuster
- 3 tiny scoops Sand
- 1 tiny scoop Coral
- 3 tiny scoops Lapis
- 1 tiny scoop Matte Blue Color Adjuster
- 2 tiny scoops Sunlight Gold
- 1 tiny scoop Green Color Adjuster



LOVE, PEACE AND PEACH  
light peach w/ beige undertones

CB

- 1 ½ t Translucent Modifier
- ¼ t Light Mineral Powder Base
- 3 tiny Rubellite
- 4 tiny Sunstone
- 5 tiny Sand
- 1 tiny Coral
- 1 tiny Agate



PEACH TOFFEE  
medium coral beige

CB

- 1 t Translucent Modifier
- ¼ t Sunlight Gold
- ⅓ t Sunstone
- ⅓ t Rubellite
- ¼ t Coral
- ⅓ t Sand
- 2 tiny scoops Yellow Color Adjuster
- 1 tiny Bronze



PEACH TRUFFLE  
deep bronzed coral

CB

- ½ t Sunlight Gold
- ½ t Medium Mineral Powder Base
- ¼ t Antique Gold
- ¼ t Sand
- ¼ t Fire Opal
- ¼ t Agate
- 1 tiny Garnet
- 3 tiny Star Ruby
- 2 tiny Brass
- 1 tiny Matte Red Color Adjuster
- 1 tiny Sienna

BLUSH

Color of the Year 2024  
Peach Fuzz

Color of the Year 2024  
Peach Fuzz

# PEACH FUZZ

## Made easy

# RTW BLUSH

**WE'VE CHOSEN A COLLECTION OF READY TO WEAR** items that reflect the versatile hues inspired by the Pantone of the Year: **PEACH FUZZ**. The range of shades communicates a warm, luxurious, and comforting feel for eyes, cheeks and lips.



ADOBE  
peach brown  
matte



FRESH PEACH  
light coral peach  
matte



SWEETS  
tangerine w/pink undertone  
shimmer



RISQUÉ  
light salmon  
shimmer



SWEETS  
tangerine w/pink undertone  
shimmer



FLUSHED  
honey peach  
matte



CREAMY PEACH  
peach pink  
matte



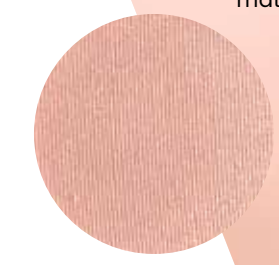
PEACH SUEDE  
muted peach  
matte



TOFFEE  
peachy tan  
matte



CANDY APPLE  
peach w/pink-gold undertone  
shimmer



CHABLIS  
neutral, light pink-brown  
shimmer



SUNSET  
peach coral  
matte

MALT  
soft nude brown  
matte

# RTW EYES



Color of the Year 2024  
Peach Fuzz

SS-2024

Color of the Year 2024  
Peach Fuzz

PEACH FUZZ

Made easy

RTW EYES



FAUX REAL MASCARA

BLACK BROWN



WATERPROOF AUTOMATIC GEL LINER

CHOCOLATE OPAL

Waterproof Gel Eyeliner / CHOCOLATE OPAL  
NET WT. 0.012 oz. / 0.34 g



WATERPROOF LUXURY GEL LINER

LUSH SOFT BROWN

LUSH BROWN



SKETCH STICK™ EYE

CASHMERE



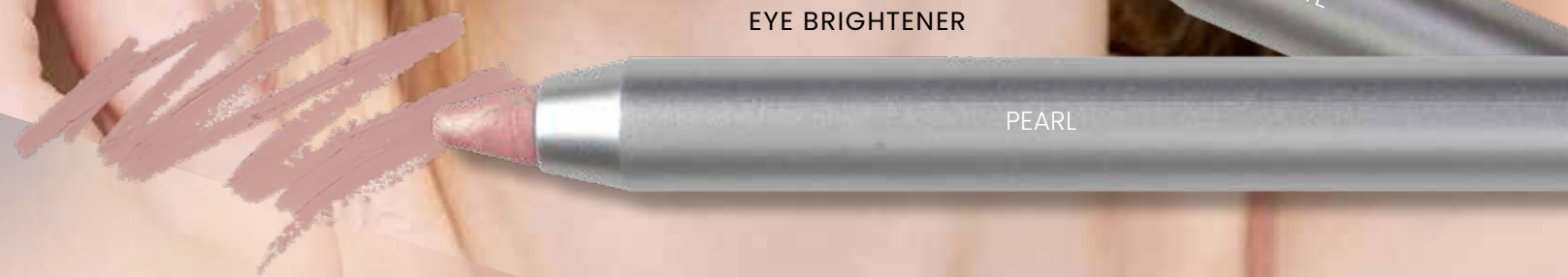
0.07oz 1.9g  
waterproof

SKETCH



EYE BRIGHTENER

MATTE



PEARL

PEACH FUZZ

Made easy

PEACH FUZZ brings a lively warmth to the skin, enhancing the eyes, lips, and cheeks with a soft glow, giving those who wear it a healthier appearance.

RETURN TO LIPS

|  |   |   |  |
|--|---|---|--|
| <br>CARESS<br>copper shimmer<br>smooth creamy | <br>STRUT YOUR STUFF<br>coral<br>smooth creamy | <br>BROWN SUGAR<br>copper brown shimmer<br>smooth creamy | <br>NATURAL KISS<br>cool, nude mauve<br>smooth creamy |
|--|---|---|--|

|  |   |   |
|--|---|---|
| <br>DIORABLE<br>light violet mauve<br>sheer shiny | <br>SWEET RETREAT<br>coral shimmer<br>color wash | <br>SKINNY DIP<br>nude peach<br>liquid matte |
|--|---|---|

Color Wash  
COLLECTION

PEACH  
soft nude  
lip plumper

|  |   |
|--|---|
| <br>OPEN UP<br>peachy nude<br>ultra matte | <br>WAIT A MINUTE<br>neutral nude<br>ultra matte |
|--|---|

GLOSS

|  |  |
|--|--|
| <br>BEAUTY QUEEN<br>nude coral shimmer<br>lip glitz       | <br>BELLISIMO<br>soft gold shimmer<br>lip glitz   |
| <br>HELLO SEXY<br>peachy beige w/gold flecks<br>lip glitz | <br>TICKLED PINK<br>icy pink shimmer<br>lip glitz |

|  |  |
|--|--|
| <br>IN THE BUFF<br>nude peach | <br>SALT WATER KISSES<br>peachy beige shimmer |
|--|--|

Natural  
COLLECTION

SKETCH STICK™ LIPS

|   |   |   |
|---|---|---|
|  |  |  |
|---|---|---|





# LIMITED EDITION PEACH FUZZ

**P**each Fuzz is the perfect multi-tasking product that makes getting ready quick and easy. The no fuss, universally flattering shade that can be worn as blush, bronzer, eyeshadow or even a lip tint (add a little gloss over it and voilà!).



PEACH FUZZ  
Peach with golden shimmer



ColorlabPrivateLabel.com • 1.800.790.2417

