

SS-2023 DUPES

Color+Lab  
PRIVATE LABEL

STAY ON-TREND WITH  
**DUPES**

## COLORLAB CUSTOM BLEND SYSTEMS

are the solution for creating dupes of popular products that are always sold out due to social media and viral trends. With the ability to create custom shades and formulas, we can replicate sought-after products that are hard to find, giving customers a chance to experience the trend without having to wait for restocks.

This customization also allows for personalized tweaks to the formula, ensuring that the final product matches the customer's unique preferences and skin tone. Overall, our custom blend systems offer a practical and effective solution for beauty enthusiasts looking to stay on-trend.



colorlab<sup>®</sup>  
PRIVATE LABEL

CUSTOM BLEND DUPES



## MINERAL POWDER SYSTEM

**HUDA BEAUTY** Easy Bake Loose Setting Powder in Cherry Blossom has recently been trending in the beauty community for its soft pink tint and long-lasting formula. With our **Mineral Powder System**, it's possible to recreate this popular product with a personalized touch. By adjusting the ratios of pigments and powders, you can match Huda **Cherry Blossom** hue or adjust the formula for different skin tones and textures...plus, you can add some skin-loving ingredients, such as **vitamins and antioxidants**.

HUDA BEAUTY



### HUDA BEAUTY EASY BAKE LOOSE SETTING POWDER CHERRY BLOSSOM

- 1 † + 1/8 † Flawless Finish
- 3/4 † Translucent Modifier
- 1/2 † Moonlight Pearl Luminescence
- 1/8 † Eye Brightening Active Powder
- 1/8 † Moisturizing Active Powder
- 2 tiny Tourmaline
- 1 tiny Yellow Saturated Color

Dior



### DIOR ROSY GLOW BLUSH (RTW FIRST BLUSH)

- 1/2 † + 1/8 † Rubellite
- 1 † Translucent Modifier
- 1/4 † Alabaster
- 1/8 † Moonlight Pearl
- 3 tiny Crystal Frost



Too Faced

### TOO FACED CLOUD CRUSH BLUSH NATURAL FINISH (RTW CAMERA READY)

- 1/4 † Coral Frost
- 1/4 † + 1/8 † Rubellite
- 1 1/4 † Translucent Modifier
- 1/8 † Moonlight Pearl
- 1 tiny Star Ruby Frost



## FOUNDATION SYSTEM

**CHARLOTTE TILBURY**'s Flawless Filter is known for its ability to blur imperfections and give the skin a radiant glow. Our **Foundation System** can create a customizable formula similar to Charlotte Tilbury's Flawless Filter. The system includes light-reflecting and nourishing ingredients that allows for customizable shade and coverage.

**FENTY** Eaze Drop Lit and **DRUNK ELEPHANT** Bronzing Drops have made the charts for the top products for faking sun-kissed skin. Modify the formula to create a warmer or cooler version.



Charlotte Tilbury

### CHARLOTTE TILBURY HOLLYWOOD FLAWLESS FILTER FOUNDATION

- 10ml Double Back Beauty Balm\*
- 5ml Foundation Base
- 2 pumps Pearl Toner or Bronze Pearl Toner (deeper tones)
- 8 drops Waterproof Mixing Liquid
- 1/2 pump Purple Toner (gives a brightening effect)
- Mix, put in 1/2 oz Airless Pump

\*You can replace the Double Back BB Cream with Fringe Benefit. If you do this, add 1 more pump of Pearl Toner.

### FENTY EAZE DROP LIT (RTW FIT AND FLUSHED)

- 25 ml Beauty Balm
- 5 ml Thinner
- 2 pumps Pearl Toner
- 3 pumps Yellow Brown
- 2 pumps Blue Brown
- 1 pump Black
- 8 drops Waterproof mixing liquid
- 1 small scoop of Gold Dust frost
- 1 ml copper peptides
- 1 ml firming complex

Adjust toners as needed for customer skin tone; add yellow red to provide a sun kissed effect vs the golden glow.

FENTY BEAUTY  
BY RIHANNA



LIPSTICK SYSTEM



**TOM FORD Lip Balm** is described as sumptuous, pearlescent indulgence. A balm that mimics the look of bright sun glittering on crystalline snow. It's a pale pink sheer shade with shimmering outer surface. Add some lip plumper for the ultimate treatment.

Here's the Dupe for you.

**TOM FORD BALM FROST**

- Butter Base
- 1 small scoop Lip Glace
- 1 tiny drop of Coral Pigment
- 2ml Moisture Additive
- 6 drops Silkening Modifier
- 6 drops Multi Floral Complex

Remove from lipstick mold and brush on Twinkle Foil. Do not brush on face or slant of lipstick. Mix 1 tiny Gold Dust with 2 tiny Twinkle Foil. Lightly brush on another layer.



**JONES ROAD**

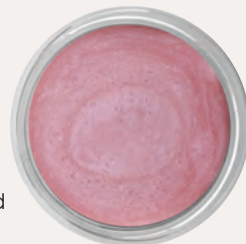
**JONES ROAD Miracle Balm** has been slated as 'the secret to no make-up makeup'. It creates a wash of soft-focus moisture to perfect and enhance skin. It can be worn alone or layer on top of foundation to refresh the skin.

**JONES ROAD MIRACLE BALM AU NATUREL (RTW STARLIGHT)**

- Crème Base
- 2 tiny Crystal Frost
- 2 tiny Fuchsia Frost

Place the following in a disposable cup and do not heat!  
 • 2 ml Moisture Additive  
 • 4 pumps Ultra Lipid Moisture Complex aka Beauty Oil

Mix and melt the base and frost, once liquified in base cup, add the oils from the disposable cup. Pour into a 5-gram powder jar (sifter is not needed).



**JONES ROAD MIRACLE BALM TAWNY (RTW NIGHTLIGHT)**

- Crème Base
- 1 tiny Bronze Frost
- 1 tiny Champagne Frost
- 1 drop Wineberry

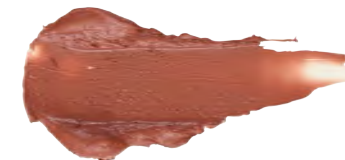
Place the following in a disposable cup and do not heat!  
 • 2 ml Moisture Additive  
 • 4 pumps Ultra Lipid Moisture Complex aka Beauty Oil

Mix and melt the base and frost, once liquified in base cup, add the oils from the disposable cup. Pour into a 5-gram powder jar (sifter is not needed).



LIPSTICK SYSTEM

Whether it is **CHARLOTTE TILBURY** or **FENTY** or anything in between, our Lipstick System can create or recreate a shade. Customization is trending and creating your personal shade is in high demand all while catering to the individual's unique preferences and skin tone.



**CHARLOTTE TILBURY PILLOW TALK MEDIUM (RTW NATURAL KISS)**

- Matte Base
- .25x 3 Mahogany
- .25 x 3 Peach
- .25 Brown
- .125 + .125 Ochre
- .125 Wineberry
- 3 tiny Garnet Frost
- 2 tiny Pink Frost
- 3 tiny Pink Gold Frost



**CHARLOTTE TILBURY PILLOW TALK ORIGINAL (RTW THINK PINK)**

- Matte Base
- .25 +.25 +.125 +125 Mahogany
- 1.0 + .25 + .25 Peach
- .125 +.125 Wineberry
- .125 x 3 Cocoa
- .125 Ochre
- 4 tiny Pink Frost



**CHARLOTTE TILBURY PILLOW TALK INTENSE (RTW ON THE PROWL)**

- Crème Base
- 1.0 Mahogany
- .25 Wineberry
- .50 Peach
- .25 +.25 Brown
- .125 + .125 Ochre
- .125 +.125 Black

**JONES ROAD MIRACLE BALM BRONZE (RTW NIGHTLIGHT)**

- Crème Base
- 2 tiny Bronze Frost
- 1 tiny Russet Frost
- 3 tiny Antique Gold Frost

Place the following in a disposable cup and do not heat!  
 • 2 ml Moisture Additive  
 • 4 pumps Ultra Lipid Moisture Complex aka Beauty Oil

Mix and melt the base and frost, once liquified in base cup, add the oils from the disposable cup. Pour into a 5-gram powder jar (sifter is not needed).



SS-2023 DUPES



# HAT'S HOT?

## ILIA

ILIA LIQUID POWDER  
CHROMATIC EYE TINT  
Allure and Glamour  
Magazine Best of Beauty



Liquid eyeshadow for all day, no-mess color is versatile and perfect for all over wash or color on the eyelids. **Sheer or intense color** that caresses the eye with a lightweight powdery finish.

**How it works:** Glides like a cream, dries like a powder. This liquid eyeshadow swipes on effortlessly and instantly locks in place without creasing. Sweep the cushiony wand along your eyelid for a **bold metallic payoff**, or gently blend it out for a more diffused wash.

It's a quick dry formula that sets within seconds, apply to one eye at a time and pat in place, if more color is desired apply a second coat after first layer has dried down. Try them as highlighters and cheek color too!



colorlab<sup>®</sup>  
PRIVATE LABEL



**MOONGLOW (ILIA AURA)**  
Liquid Matte Base  
• 2 † Crystal Frost  
• ¼ † Champagne Frost  
• ¼ † Sand Frost



**HALO (ILIA GLAZE)**  
Liquid Matte Base  
• 1 † Crystal Frost  
• ¾ † Champagne Frost  
• ¼ † Sand Frost



**SUPERNOVA (ILIA BURNISH)**  
Liquid Matte Base  
• 1 † Champagne Frost  
• 1 † Crystal Frost  
• ½ † Sand Frost



**NUDIST (ILIA GLEAM)**  
Liquid Matte Base  
• .125 Brown  
• ¼ † plus ⅙ † Moonlight Pearl  
• ¼ † Alabaster  
• ⅙ † + ¼ † Champagne Frost  
• ⅙ † + ¼ † Sand Frost  
• 2 drops Ochre

## DUPES USING OUR LIQUID MATTE LIPSTICK BASE AND WATERPROOF MIXING LIQUID.

Heat in 10 second intervals, stir, heat 10 seconds, add 8 drops Waterproof Mixing Liquid, stir, pour.



**PINCH ME (ILIA MYTHIC)**  
Liquid Matte Base  
• 2 † Crystal Frost  
• ¾ † Light Mineral Powder  
• ½ † Fire Opal Frost  
• ½ † Moonlight Pearl  
• 8 tiny Sienna Frost  
• .125 x 6 Brown



**OCEANS AWAY (ILIA HATCH)**  
Liquid Matte Base  
• 1 † Saturated Blue  
• ¾ † Saturated Green  
• ¼ † Antique Gold Frost



**DEEP STATE (ILIA FRESCO)**  
Liquid Matte Base  
• 1 † Silver Frost  
• 1 † Brass Frost  
• ½ † Champagne Frost



**UMBER (ILIA BURNISHED)**  
Liquid Matte Base  
• 1 † Antique Gold Frost  
• 1 † Bronze Frost  
• ½ † Brass Frost  
• 2 tiny Onyx

ColorlabPrivateLabel.com

1.800.790.2417



# LIPSTICK SYSTEM

# FB

## FENTY BEAUTY BY RIHANNA



### FENTY GLOSS BOMB NATURAL GLOW (RTW PUCKER UP)

Lip Polish Base

- 1 drop Russet
- 2 tiny Champagne Frost
- 1 tiny Twinkle



### FENTY GLOSS BOMB HEAT GLOSS (RTW GET LIPPY! SHEER)

Lip Glacé Base

- 2 drops of Red Red Pigment
- 1 drop of Ruby Red Lip Stain  
(this adds a beautiful kiss of color in between application)
  - .5ml of Lip Plumper
  - .5ml of Multi Floral Complex
- 2 drops of Mint Julip (adds an additional plumping effect)
  - 4 drops of Peach Sorbet

